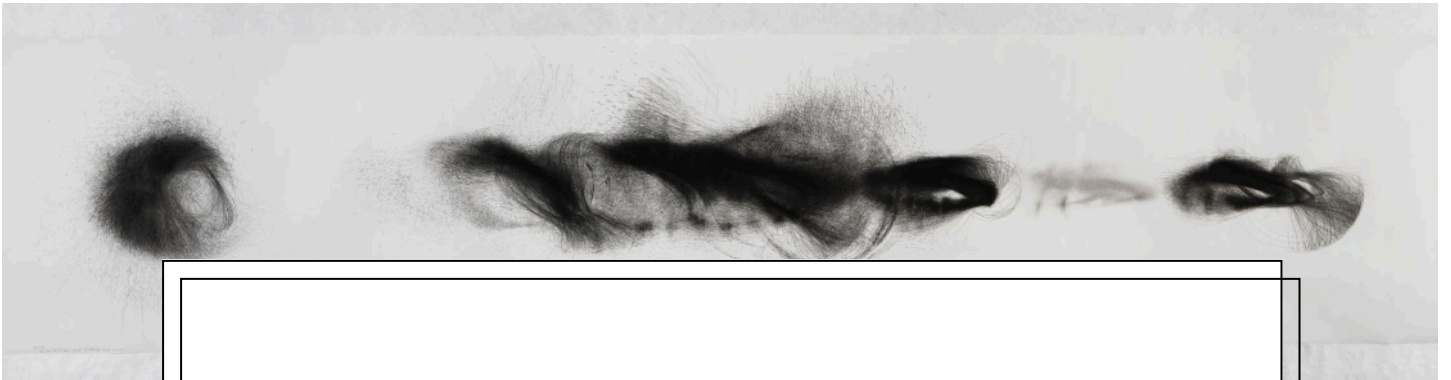


the garb wire



MONA: CAMERON ROBBINS - FIELD LINES

ART, DESIGN, EXHIBITION, EXPERIENCE, HOBART, TASMANIA, TRAVEL, UNCATEGORIZED by MELISSA
OGIER - MAY 6, 2016

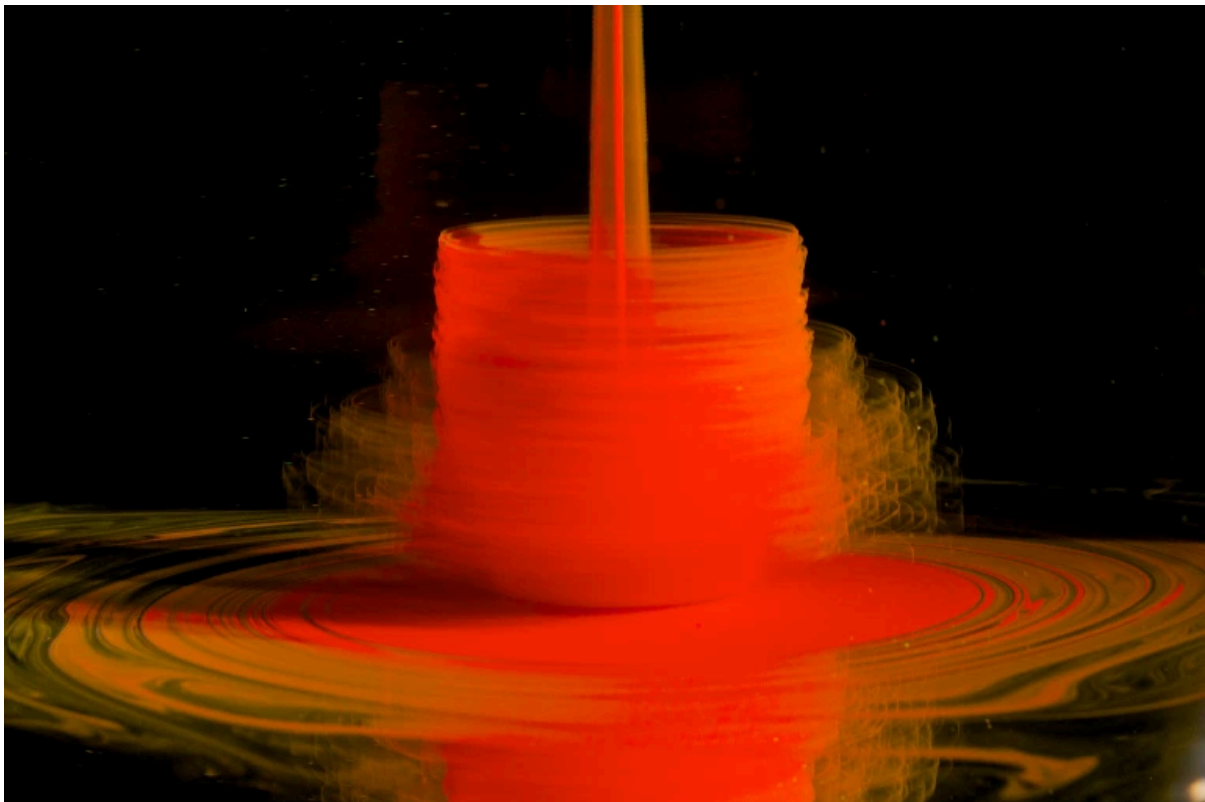
AUSTRALIAN ARTIST CAMERON ROBBINS' WORK MERGES NATURAL FORCES WITH THE ELEMENTS. BY ENGINEERING STRUCTURAL INSTRUMENTS AND DEVICES, SUCH AS WIND OR OCEAN-POWERED MECHANICAL SYSTEMS AND SITE-SPECIFIC INSTALLATIONS, ROBBINS CREATES A CALL AND RESPONSE BETWEEN ARTIST AND NATURE.

Field Lines will be Robbins' first international solo exhibition in a major museum, including seven new installations developed specifically for **Mona** - many sympathetic to the museum's location. Some installations will generate work for the duration of the exhibi-

than three decades of Robbins' practice. While the exhibition runs from 18 May–29 August, the official opening will take place during Dark Mofo 2016 on Saturday 11 June.

'SOME ARTISTS CAN GIVE US A GLIMMER OF THINGS THAT WE USUALLY CAN'T SEE. MONA DELIGHTS IN SUCH ARTISTS. CAMERON ROBBINS GIVES NATURE A VOICE, BUT HE'S NOT TELLING IT WHAT TO SAY.'

—David Walsh



Dissipative Structures (video still) 2012 Cameron Robbins Image courtesy of the artist and Mona (Museum of Old and New Art, Hobart, Tasmania, Australia)

THIS DRAWING PRACTICE HAS LED ROBBINS TO FOCUS ON FORMS GENERATED BY NATURAL ENERGY, INCLUDING THE EXPLORATION OF VORTEXES,



Loops Mt Jim Magnetic Anomaly, Loops II 2011 Cameron Robbins
Image courtesy of the artist and Museum of Old and New Art,
Tasmania

Field Lines will include an imposing collection of 16 drawings, up to five metres in length from *Wind Section Instrumental* (2013), plus installations, photography, sculpture and video, as well as works being created on-site throughout the duration of the exhibition, involving tidal motions from six metres below the museum and the forces of wind from above.

ABOUT THE ARTIST

Cameron Robbins lives and works in Melbourne and is inspired by natural forces and the elements in site-specific locations internationally. He creates structural devices such as wind or ocean-powered mechanical systems, site-specific installations, wind drawings, photographs and sound compositions.

ments, installations, fire and sound. Since 1990 Robbins has exhibited in Australia, Europe and Asia, including shows at the National Gallery of Victoria, Australian Centre for Contemporary Art, Artspace, Perth Institute of Contemporary Art, Setouchi Festival of Art Japan, East China Normal University, plus Hong Kong and Korean International Art Fairs. Robbins was Artist in Residence at NKD – Nordic Arts Centre in 2013.

Field Lines is curated by Nicole Durling and Olivier Varenne. The exhibition will be accompanied by a catalogue including interview with the artist and essay by Mona curator, Jarrod Rawlins.

CAMERON ROBBINS – FIELD LINES

18 MAY–29 AUGUST 2016

**MUSEUM OF OLD AND NEW ART HOBART, TASMANIA,
AUSTRALIA**

**OFFICIAL OPENING: 4PM SATURDAY 11 JUNE 2016 (DURING
DARK MOFO 2016)**

Get Social:

- Cameron Robbins website
- Mona website
- Twitter @dark_mofo
- Instagram @monamuseum @cameroon63 @dark_mofo
- Facebook @darkmofofestival
- YouTube @monamuseum

Pictured at top: Wind Section 16-23/12/2013 (Snake and Egg) Cameron Robbins (born 1963, Melbourne, Australia, where he lives and works). Weather-powered drawing machine installation; materials include painted wood, stainless steel, aluminium, ball bearings, shock cord, wire, paper, ink. Photo Credit: MONA/Rémi Chauvin. Image courtesy of the artist and MONA Museum of Old and New Art, Hobart, Tasmania, Australia

#ADVENTURES #ART #AUSTRALIA #CAMERON ROBBINS #DARK MOFO #DARK MOFO 2016
#DARKMOFO #FIELD LINES #HOBART #MONA



STYLIST KATE CARNEGIE'S PAINTED ICONS

KAYTRANADA DEBUT ALBUM 99.9% OUT NOW + BRILLIANT



LEAVE A COMMENT

This site uses Akismet to reduce spam. [Learn how your comment data is processed.](#)

Website Built with [WordPress.com](#).

[ABOUT](#)