



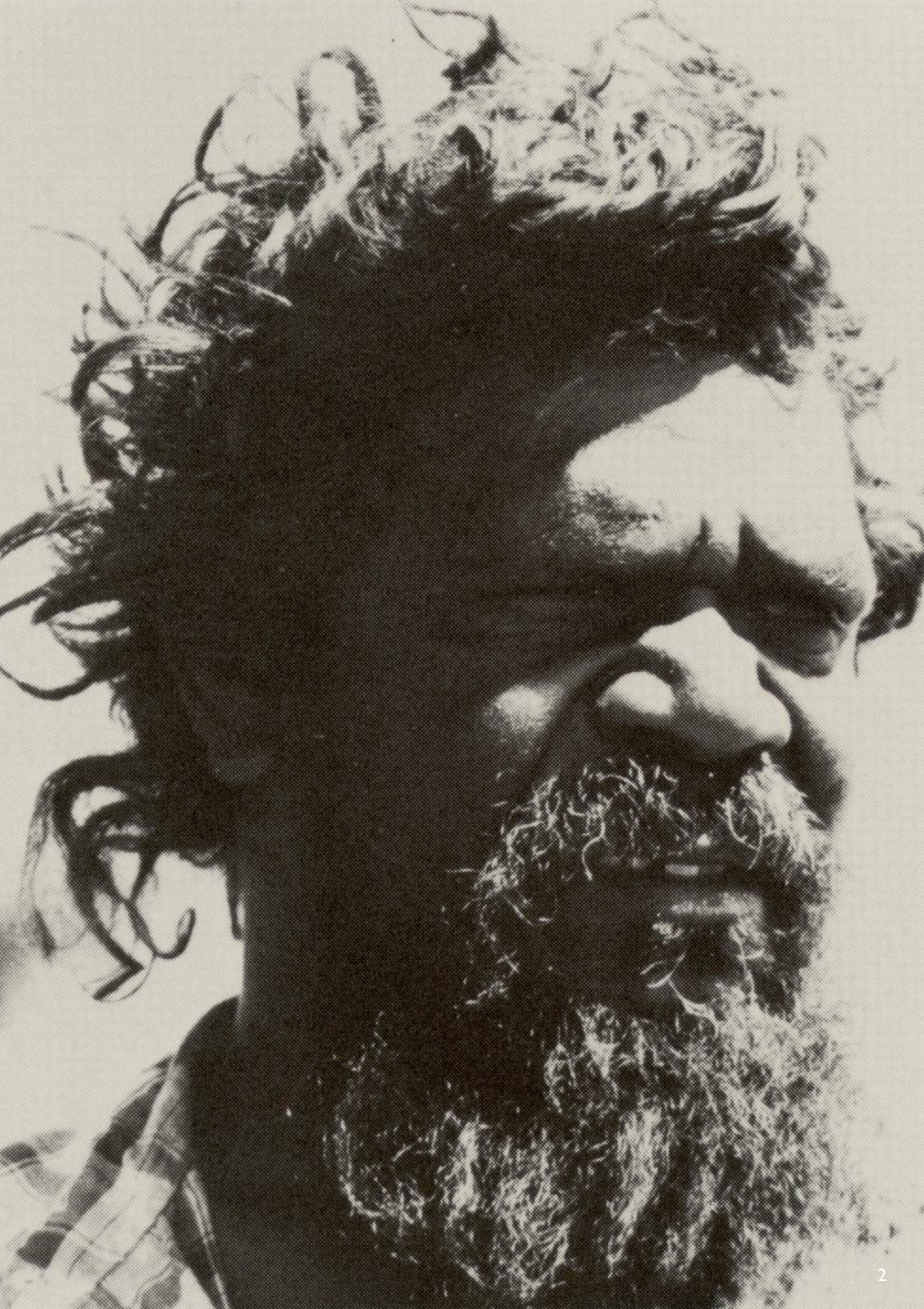
22.01 — 09.05

# Clifford Possum Tjapaltjarri

*Master of the Western Desert*

**OLIVIER VARENNE**  
ART MODERNE & CONTEMPORAIN





## CLIFFORD POSSUM TJAPALTJARRI (1932–2002)

Clifford Possum Tjapaltjarri (1932–2002) was one of Australia's most celebrated Aboriginal artists and a pioneering figure of the Western Desert painting movement. Born near Napperby Station in the Northern Territory, he belonged to the Anmatyerre people and was among the first generation of artists to translate traditional sand and body painting motifs onto canvas in the early 1970s. His practice, deeply rooted in the Dreaming stories and topographies of his ancestral lands, transformed these ancient narratives into vast, dynamic compositions — maps of Country that intertwine myth, geography, and memory.

Possum's large-scale paintings are characterised by their rhythmic structures, layered symbolism, and sophisticated use of colour and pattern. They reflect both a meticulous knowledge of Indigenous cosmology and an intuitive grasp of modern abstraction, positioning his work at the intersection of cultural preservation and contemporary expression. Today, his paintings are held in major institutions worldwide, including the National Gallery of Australia, the Art Gallery of New South Wales, and the British Museum, affirming his legacy as a central voice in 20th-century art and a bridge between traditional knowledge and global modernism.









**CLIFFORD POSSUM TJAPALTJARRI**  
**AVAILABLE WORKS**



**CLIFFORD POSSUM  
TJAPALTJARRI  
(1932-2002)**

*LOVE STORY AT NGARLU, 1994*

synthetic polymer paints on Belgian linen  
127 x 180 cm.









**CLIFFORD POSSUM**  
**TJAPALTJARRI**  
**(1932-2002)**

*LOVE STORY, 1981*

synthetic polymer paints on Belgian linen  
102.4 x 77.2 cm.









**CLIFFORD POSSUM  
TJAPALTJARRI  
(1932-2002)**

*NAPPERBY CREEK, 1994*

synthetic polymer paints on Belgian linen  
137.5 x 199.5 cm.









**CLIFFORD POSSUM  
TJAPALTJARRI  
(1932-2002)**

*EAGLE DREAMING, 1994*

synthetic polymer paints on Belgian linen  
145.3 x 74.5 cm.



**CLIFFORD POSSUM  
TJAPALTJARRI  
(1932-2002)**

*NAPPERBY WORM DREAMING, 1996*

synthetic polymer paints on Belgian linen  
122 x 153 cm.









**CLIFFORD POSSUM  
TJAPALTJARRI  
(1932-2002)**

*NAPPERBY WATER DREAMING, 2000*

synthetic polymer paints on Belgian linen  
152 x 65 cm.





**CLIFFORD POSSUM**  
**TJAPALTJARRI**  
**(1932-2002)**

*TJUNGURRAYI AND TJAPALTJARRI DREAMING, 1998*

synthetic polymer paints on Belgian linen  
120 x 237 cm.









**CLIFFORD POSSUM**  
**TJAPALTJARRI**  
**(1932-2002)**

*DREAMING STORY AT WARULUGULONG, 1996*

synthetic polymer paints on Belgian linen  
101.5 x 76 cm.





**CLIFFORD POSSUM**  
**TJAPALTJARRI**  
**(1932-2002)**

*NAPPERBY LAKES MOUNTWEDGE, 1994*

synthetic polymer paints on Belgian linen  
136.7 x 213.3 cm.





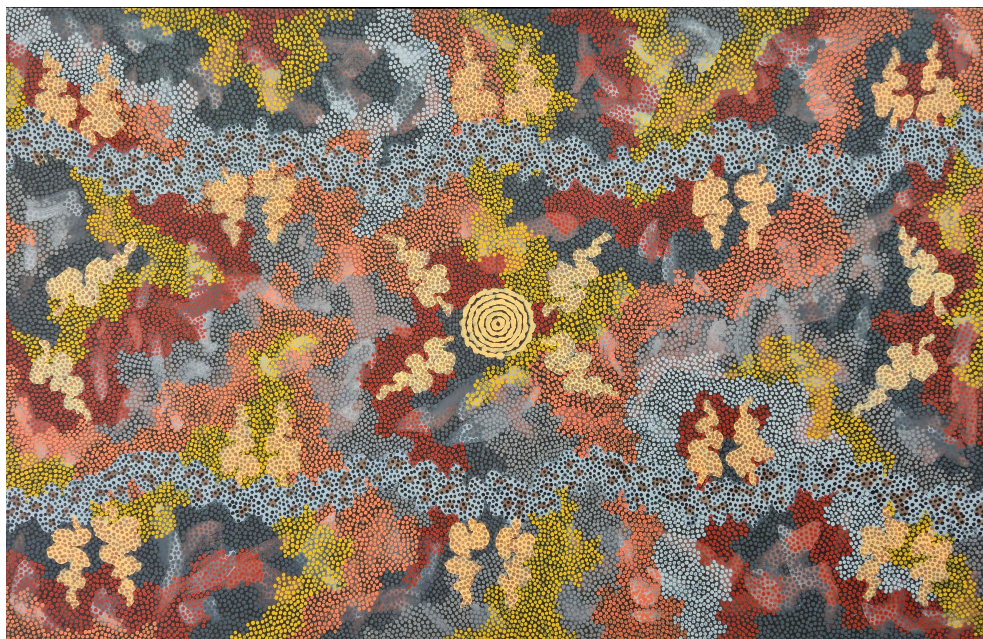




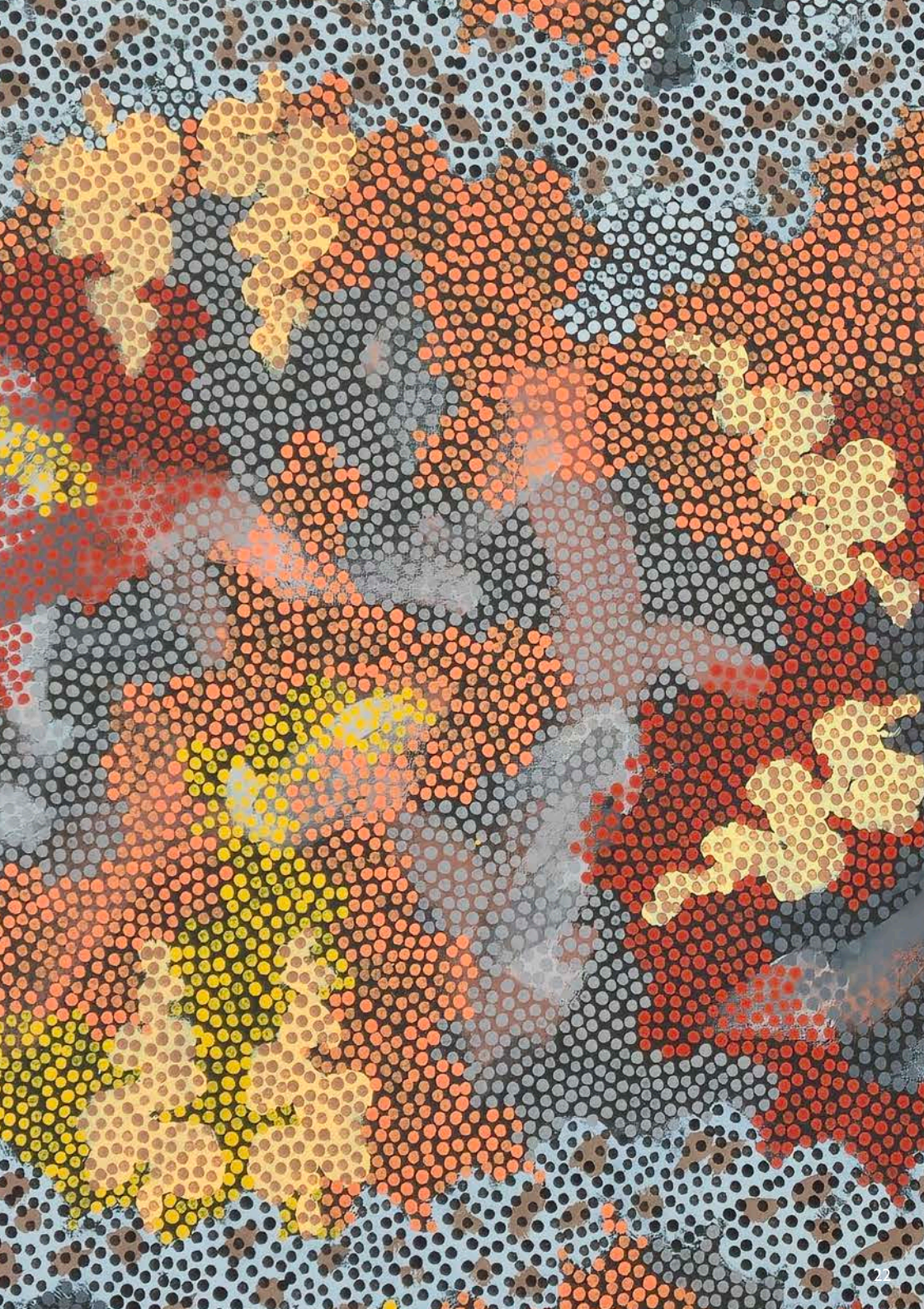
**CLIFFORD POSSUM  
TJAPALTJARRI  
(1932-2002)**

*CORKWOOD DREAMING, 1994*

synthetic polymer paints on Belgian linen  
137 x 214 cm.









**CLIFFORD POSSUM  
TJAPALTJARRI  
(1932-2002)**

*BUSH FIRE DREAMING, 1995*

synthetic polymer paints on Belgian linen  
75.5 x 112 cm.





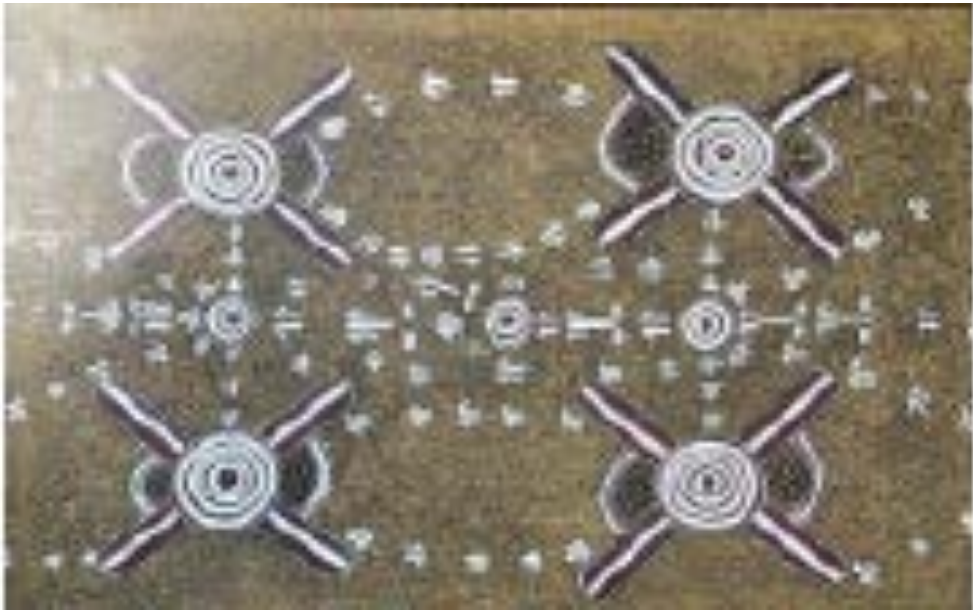




**CLIFFORD POSSUM**  
**TJAPALTJARRI**  
**(1932-2002)**

*ROCK WALLABY STORY, 1976*

synthetic polymer paints on Belgian linen  
102.5 x 152.5 cm.





**CLIFFORD POSSUM**  
**TJAPALTJARRI**  
**(1932-2002)**

*TJANGALA BROTHERS*

synthetic polymer paints on Belgian linen  
48 x 63 cm.





**CLIFFORD POSSUM  
TJAPALTJARRI  
(1932-2002)**

WARLUGULONG, 1997

synthetic polymer paints on Belgian linen  
146 x 93.5 cm.











OLIVIER VARENNE  
ART MODERNE & CONTEMPORAIN  
37-39 RUE DES BAINS  
1205 GENEVA  
SWITZERLAND  
TEL + 41 22 810 27 27  
INFO@VARENNE.ART  
VARENNE.ART

**OLIVIER VARENNE**  
ART MODERNE & CONTEMPORAIN